

2019 | PACE ARROW LXE

CLASS A DIESEL



LASTING DEPENDABILITY | FAMILY FAVORITE | FEATURE PACKED

 **FLEETWOOD RV**

www.fleetwoodrv.com



PACE ARROW LXE 38N
Shown in Aurora

FIRST CLASS MEETS MOTHER NATURE

When standard simply won't suffice, the 2019 Pace Arrow LXE is ready to take your adventures to another level. Pace Arrow LXE is a luxury-packed Class A Diesel featuring an automotive style dash, elegant cabinetry doors and drawers, a two-burner induction cooktop, a Hide-A-Loft™ drop-down queen bed, residential refrigerator and a Blu-ray® entertainment center, to start. Pick from one of four impressive floorplans, each with modern interiors, then enjoy the finer life with soft-touch ceilings and hand-laid composite tile flooring.

YOU WANT EVERY SINGLE ADVANTAGE WHEN IT COMES TO YOUR RV.

At REV, we don't settle for anything less than the best, and neither should you. That's why every Fleetwood RV motorhome features industry-leading materials and construction. With these REV brands, you'll also find the ultimate in RV convenience and strength, like our auto hydraulic leveling system, Vacu-Bond™ construction, Dryseal™ edge coating, and much more – all coming standard to elevate your travels.

Each of these advantages have been engineered to deliver superior reliability, durability, and most of all, customer satisfaction.

1. Power Bridge™ (Diesel Motorhomes)

REV's Power Bridge chassis is exclusive and provides customers with superior handling; cavernous storage, enormous holding tank capacities and a better ride. With its modern-engineers all-steel structure, the Power Bridge creates a true side-to-side, front-to-rear and belly-to-beltline bridging platform that is custom designed for each Class A Diesel floorplan. This is a vast improvement over standard rail technology, and it's the perfect pairing with the Freightliner XCM chassis.

**Construction modifications on Pace Arrow

2. Auto Hydraulic Leveling System

More reliable than electric leveling jacks, our automatic hydraulic leveling system is reliable, durable and easy to use. The operating procedure is clean and easy, the results are smooth, simple leveling at the push of a button.

3. Powerlock System™ (Interlocking Floors, Walls, and Ceiling)

REV's interlocking aluminum extrusion wall-joint system integrates floor, sidewall, and roof assembly into one locked-together overall structure for long-term performance and durability.

4. Powerframe System™ (Precision-Welded Aluminum Walls, Floor, and Roof Structures)

Our wall, floor, and roof frames are designed and engineered to fit precisely with interlocking extrusions on the steel-reinforced bridge structure. No "hammer-it-to-fit" stick and frame construction here.

5. Vacu-Bond™ Construction

Vacuum-bonded assemblies combine industry-leading materials and construction for a straight and flat integrated wall that's better suited to the rigors of the road. It applies up to 415,000-pounds of vacuum pressure to our already strong welded-aluminum sidewall frame, bead-foam panel insulation, Tuff-Coat fiberglass skin, and inner wall materials for over 30 minutes – far exceeding industry standards.



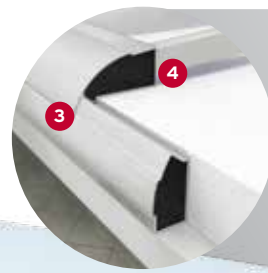
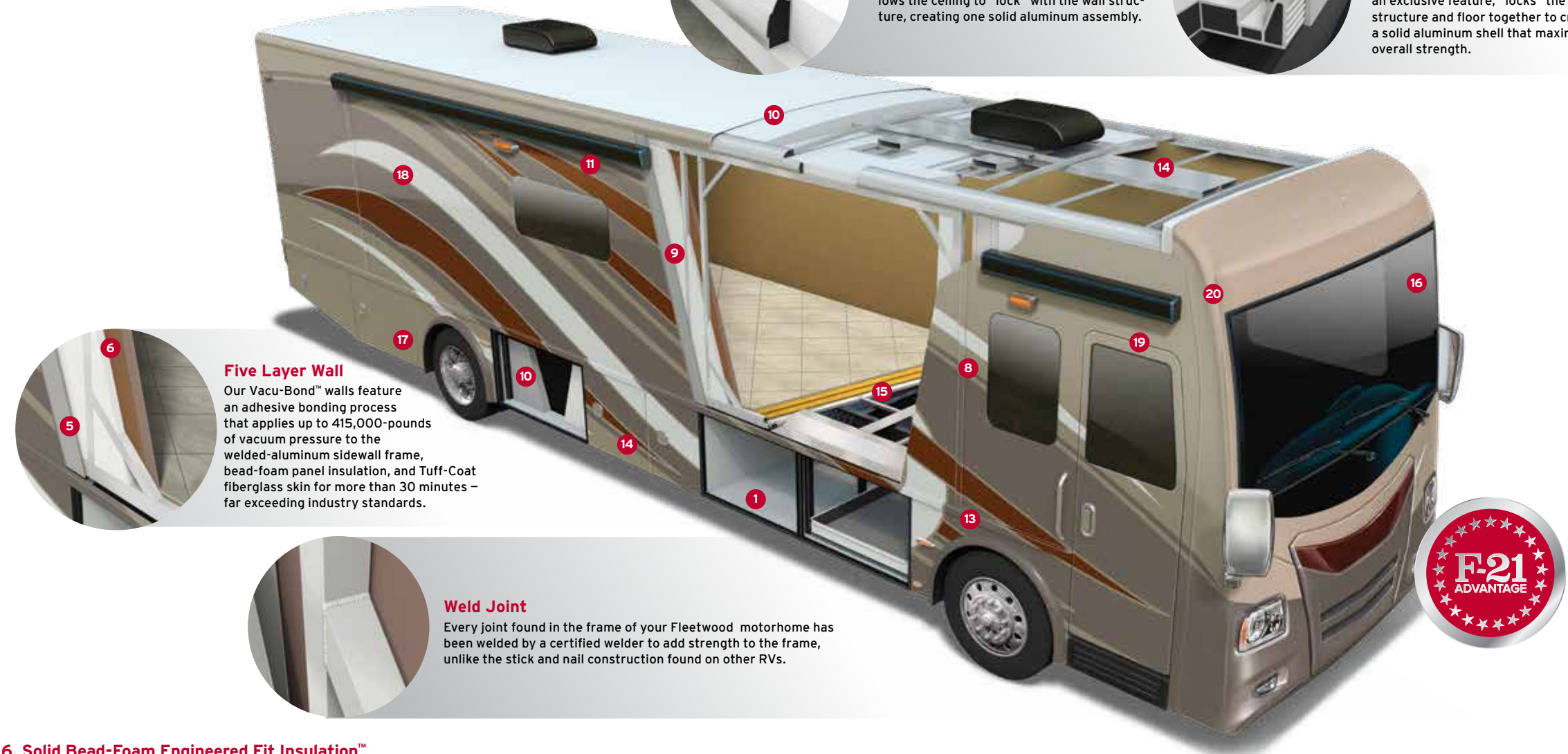
Five Layer Wall

Our Vacu-Bond™ walls feature an adhesive bonding process that applies up to 415,000-pounds of vacuum pressure to the welded-aluminum sidewall frame, bead-foam panel insulation, and Tuff-Coat fiberglass skin for more than 30 minutes – far exceeding industry standards.



Weld Joint

Every joint found in the frame of your Fleetwood motorhome has been welded by a certified welder to add strength to the frame, unlike the stick and nail construction found on other RVs.



Ceiling Interlock

You won't find stick and frame construction here. Our exclusive extruded aluminum allows the ceiling to "lock" with the wall structure, creating one solid aluminum assembly.



Floor Interlock

To give your RV's structure a precise, seamless fit, our extruded aluminum, an exclusive feature, "locks" the wall structure and floor together to create a solid aluminum shell that maximizes overall strength.



6. Solid Bead-Foam Engineered Fit Insulation™

In some RVs, you may find air holes in the insulation. Not in a REV RV. Using exact measurements, bead-foam is placed between every structural support to eliminate any gaps and provide insulation from both exterior temperature and noise.

7. Dryseal™ Edge Coating

This water-wicking coating is applied to every edge of the walls and windows for long-lasting durability. It helps to seal out moisture, prevent delamination, swelling, and mold.

8. Tuff-Coat Fiberglass Walls

REV RV seeks to use the highest quality exterior fiberglass on our Class A gas and Class A diesel products. The impressive tuff-coat fiberglass skin is extremely weather resistant and UV resistant. Most importantly, there is no wood substrate on the exterior of the REV Class A products. Delamination is a major concern for manufacturers using the composite or wood backer in their walls. Not at REV RV, our exterior skin has no composite and no wood, just the fiberglass.

9. Tuff-Ply Engineered Vinyl Roofing

As the name implies, this "Tuff-Ply" or Thermoplastic Poly Olefin is as tough as it comes and is very low maintenance. Tuff-Ply is flexible, pliable and easily conforms with the roofline radius with little to no stress at the awning rail connection seam. Tuff-Ply is a clean, non-streaking, non-chalking engineered vinyl material that is easy to maintain.

10. Tuff-PEX™ Plumbing System

It's a complete system of flexible, yet durable, Oetiker tubing, fittings, and stainless-steel rings – all with sub-zero ratings. Colors of red for hot and blue for cold make servicing simple.

11. Tapered Slideout Box Tops

Our slideouts include a tapered roofline that directs water away from the RV to provide an additional level of moisture protection. There are also multiple bead-seals, as well as our debris awning protection.

12. Seamless Metallic Slide Room Underbelly

What's underneath is just as important as what's on top. Our metallic slide bottom goes above the standard wood bottom for protection against the elements, and adds yet another level of durability.

13. Roto-Cast Molded Luggage Bays

Instead of the industry-standard plywood, these molded bays are more durable, look great, and can be washed with a hose.

14. Dedicated Full-Length Metallic A/C Ducting

Instead of cut-out foam channels, REV provides insulated A/C ducting that runs the entire length of your motorhome with carefully placed outlets in the most occupied places to assure cool comfort.

15. Sure-Glide Flush Floor Aluminum Slide Transition Ramp

Pinewood ramps that absorb moisture, crack and rot are the industry standard. Not here! Our aluminum ramps will stay straight, extend and retract easily, and will provide you with years of trouble-free operation.

16. Automotive Inspired Bonded Windshield

REV RV's bonded windshields surpass the standard "floating" windshield in durability. The entire perimeter of glass is bonded to a frame that provides more support and is much more conducive to the demands of the road.

17. Bus-Style Cargo Doors

We far exceed the industry standards of exposed seals and hinges with a more durable design taken from our luxury motorcoaches.

18. Premium Full-Body Paint

Just like the cars, trucks, motorcycles and most any other automotive product produced today, our motorhomes receive the same premium painted protection on the exterior. Unlike the cars of today, our motorhomes are typically more than just one color. The REV RV family of painted motorhomes receive up to four different colors and as many as two separate coats of clear. Our REV RV family of Class A motorhomes are painted and clear coat protected in a state-of-the-art facility located right on the REV manufacturing campus. The results are easy to see...Better protection, better looks, and higher resale value after years of enjoyment.

19. Radiused and Cambered Entry Door

The industry standard square corner door allows for too much wind noise. So, we use a higher-end solution that fits your motorcoach's body better, latches more securely, and seals tighter.

20. Hide-A-Loft™ Overhead Bed System

A REV RV exclusive, our Hide-A-Loft™ Bed System offers a capacity of up to 500 lbs. The bed includes a queen mattress and is incredibly comfortable and easy to operate.

21. Dealer Partnership

REV's dealer relationship goes beyond the expected. We listen to our dealers and are able to provide you with a motorhome you can be proud to own and that fits your needs. This partnership allows the dealer to be a bridge between the customer and REV Group.

Build your own Pace Arrow LXE at <https://www.fleetwoodrv.com/build-your-own>



PACE ARROW LXE
Shown in Kaygan

True luxury and comfort is having it all — and the Pace Arrow LXE delivers just that by meeting all your lifestyle requirements. Whether a weekend away, a summer at the campsite or months on the road at a time, Pace Arrow LXE will meet those expectations, and then raise the bar even higher.



PACE ARROW LXE 38N
Shown in Danum

FLEETWOOD RV
www.fleetwoodrv.com





Pace Arrow LXE lets you live in residential-style living with luxury amenities and lots of space to move about. Spacious storage, full size residential refrigerator and multi-plex lighting controls.

5

6

PACE ARROW LXE 38N
Shown in Granite Cliff decor
with Greystone cabinetry



7

PACE ARROW LXE 38N
Shown in Granite Cliff decor
with Greystone cabinetry



8



For more photos visit
fleetwoodrv.com
in the Pace Arrow LXE
photo gallery.



9



10

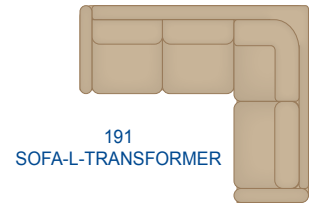
TOP SELLING FEATURES

- 340HP Cummins® w/Allison 2500 transmission
- Power Bridge chassis w/V-Ride suspension
- 100 gallon fuel tank
- 12x24 hand-laid composite tile flooring
- Exterior entertainment center w/40" LED TV & soundbar
- Residential refrigerator w/2000W Pure Sine inverter
- Soft touch ceiling w/integrated ducted air
- Impressive pass-through storage
- Illumaplex multiplex system
- On-demand hot water
- 15,000 BTU roof A/C's with a third A/C option
- Induction cook-top



FLOORPLANS

AVAILABLE OPTIONS



191
SOFA-L-TURNER



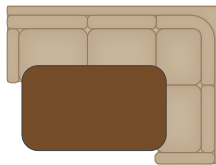
194 THEATRE SEATING



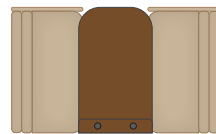
203 SOFA BED w/AIR MATTRESS



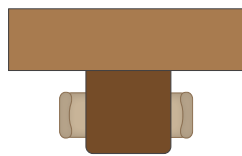
217
HIDE-A-LOFT™
DROP DOWN
QUEEN BED



809 L-SHAPED DINETTE



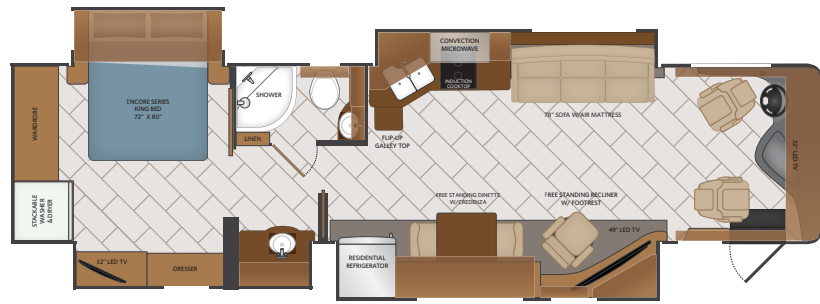
830 FACING DINETTE



833 FREE STANDING DINETTE w/CREDENZA

37R

Options: 099, 191, 194, 217, 237, 436, 563, 833



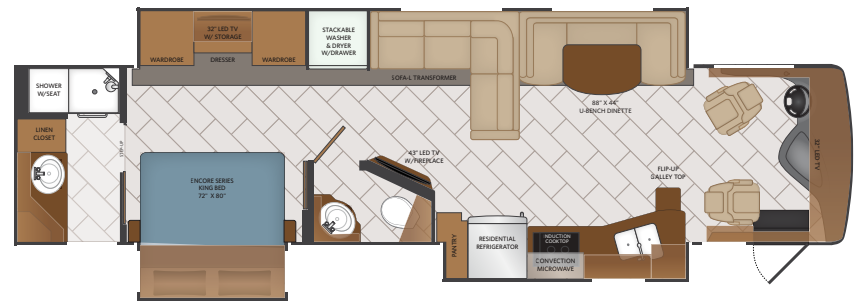
38F

Options: 099, 203, 217, 237, 436, 563, 830



38K

Options: 099, 194, 217, 237, 436, 563, 833



38N

Options: 099, 194, 217, 237, 436, 563, 809, 833



CHASSIS

MODEL	37R	38F	38K	38N
Wheelbase (inches)	245"	263"	252"	252"
Front GAWR (lbs) ²	12,400	12,400	12,400	12,400
Rear GAWR (lbs) ³	21,000	21,000	21,000	21,000
GCWR (lbs) ³	33,000	33,000	33,000	33,000
Hitch Rating Weight (lbs)*	10,000	10,000	10,000	10,000
Tongue Weight (lbs)	1,000	1,000	1,000	1,000
Fuel Capacity (gal)	100	100	100	100

DIMENSIONS AND CAPACITIES

MODEL	37R	38F	38K	38N
Overall Length (inches) ⁴	38' 8"	41' 1"	38' 8"	48' 8"
Overall Height (with A/C)	12' 10"	12' 10"	12' 10"	12' 10"
Overall Width (maximum) ^{5,6}	102"	102"	102"	102"
Interior Height (maximum)	84"	84"	84"	84"
Interior Width (maximum)	96"	96"	96"	96"
Patio Awning Width (feet & inches)	14'	18'	10' 8"	10' 8"
Interior Storage (cu. ft.)	138	173	151	151
Exterior Storage (cu. ft.)	143	156	156	156
Fresh Water Holding Tank (gal)	100	100	100	100
Grey Water Holding Tank (gal)	75	75	75	75
Black Water Holding Tank (gal)	50	50	50	50
Appliance Propane Tank (gal)	38.7	38.7	38.7	38.7
Tankless Water Heater	S	S	S	S

POWER BRIDGE® CHASSIS

Model: Freightliner® XCM Series

Engine: Cummins ISB 6.7L

Transmission: Allison® 2,500 MH 6-Speed w/Electronic Shifter

Alternator: Delcom Remy 160 Amp

Torque: 700 lb.-ft. @ 1,600 RPM

Horsepower: 340HP



099	SATELLITE DELETE
191	EXPANDABLE L-SOFA (37R)
194	THEATRE SEATING (37R, 38K, 38N)
203	SOFA BED w/AIR MATTRESS (38F)
217	HIDE-A-LOFT™ DROP DOWN QUEEN BED
237	THIRD ROOF A/C
436	CSA-FREIGHTLINER PACKAGE
563	TECHNOLOGY PACKAGE
809	L-SHAPED DINETTE (38N)
830	FACING DINETTE (38F)
833	FREE STANDING DINETTE w/CREDENZA (37R, 38K, 38N)

RV OWNERCARE

Limited one-year/15,000-mile coach warranty and three-year/45,000-mile structural warranty, whichever occurs first, and it is fully transferable for the first 12 months. RV OWNERCARE is one of the RV industry's most comprehensive programs and includes systems, appliances, components and construction, with no deductible and no service charge.

Chassis Warranty provided by Freightliner Custom Chassis Corporation®

YOUR LOCAL DEALER



OUR VERY OWN FLEETWOOD RV MOTORHOME SERVICE CENTERS

At Fleetwood RV, we strive to deliver peace-of-mind at every turn. Our devotion to customer service starts with our trusted dealer network and spans to our own staff of motorhome service professionals at REV Recreation Group's regional technical centers. The motorhome service centers are strategically located throughout the United States to provide you convenient service wherever the road takes you.

Below, you'll find the closest motorhome service center, as well as a list of the other centers. Please visit www.fleetwoodrv.com/motorhome-service-centers to schedule a Service Appointment.

East Coast REV Technical Center
800-509-3417

West Coast REV Technical Center
877-466-6226

ROADSIDE ASSISTANCE. ANYWHERE. ANYTIME.



24/7 CUSTOMER SUPPORT FOR:

- FUEL
- BATTERY
- LOCKSMITH
- TOWING
- SLIDE-OUT ISSUES
- AND MUCH MORE!

1-855-268-0414

REV GROUP

Fleetwood RV is part of REV Recreation Group, a division of REV Group, Inc., a family of 33 industry-leading motor vehicle brands. At REV Group, we innovate, design and build products that connect and protect thousands of people every day—our trusted vehicles are engineered with the utmost rigor and precision to deliver the highest levels of performance, reliability, durability and safety.

DISCLAIMERS

1. GVWR (Gross Vehicle Weight Rating) is the maximum permissible weight of this fully loaded motor home. The GVWR is equal to or greater than the sum of the (UVW) unloaded vehicle weight plus the (OCCC) occupant cargo-carrying capacity.

2. GAWR (Gross Axle Weight Rating) is the maximum permissible loaded weight a specific axle is designed to carry.

3. GCWR (Gross Combined Weight Rating) is the value specified by the motor home manufacturer as the maximum allowable loaded weight of this motor home with its towed vehicle. Towing and braking capacities may be different. Refer to Fleetwood and chassis manufacturer's manuals for complete information.

4. Length measured from front bumper to rear bumper (excludes accessories).

5. Excludes safety equipment and awnings.

6. Motor homes feature a body width over 96" which will restrict your access to certain roads. Before purchasing, you should research any state and/or province road laws which may affect your usage.

7. Tank manufacturer's listed water capacity (WC). Actual propane capacity is 80% of water listing as required by the safety code.

† The chassis manufacturer recommends the installation of a supplemental brake control system to activate the brakes on the vehicle or trailer you are towing. Hitch receiver ratings expressed are maximum for the hitch receiver installed and may require the purchase of additional equipment that is dependent on the weight of the towed load. Consult with hitch receiver manufacturer for further information.

* UVW and OCCC are found on the label containing the federal certification tag in each RV.

** Seatbelts and locations are shown in the brochure for display purposes only. Actual numbers and locations will vary by model.

*** All 2019 REV Recreation Group motorhomes include a limited one year/15,000-mile coach warranty and three-year/45,000-mile structural warranty, whichever occurs first, and is fully transferable for the first 12 months.

FLEETWOOD MOTORHOME ASSOCIATION

As a Fleetwood RV owner, you're invited to become a member of the Fleetwood Motorhome Association (FMA). Becoming a member is the perfect way to meet other Fleetwood owners who love to travel across America and share in the RV lifestyle. Visit the FMA website at www.fma4fun.org to learn more and join the fun.

CONTACT US

To locate a dealer near you, visit our website at www.fleetwoodrv.com or call 1-800-322-8216. We can also be contacted at Fleetwood RV Customer Relations, P.O. Box 1007, Decatur, IN 46733.

IMPORTANT—PLEASE READ: Product information, photography and illustrations included in this publication were as accurate as possible at the time of printing. For further product information and changes, please visit our website at www.fleetwoodrv.com or contact your local Fleetwood RV dealer. Prices, materials, design and specifications are subject to change without notice. All weights, fuel, liquid capacities and dimensions are approximate. Fleetwood RV has designed its recreational vehicles to provide a variety of uses for its customers. Each vehicle features optimal seating, sleeping, storage and fluid capacities. The user is responsible for selecting the proper combination of loads (i.e., occupants, equipment, fluids, cargo, etc.) to ensure that the vehicle's capacities are not exceeded.

www.fleetwoodrv.com

©2018 REV Group, Inc. Printed in the USA, 10/18. Model Year 2019, First Edition.